



PROGRAMMABLE AC POWER SOURCE MODEL 6500 SERIES

The global AC power testing requirements demand more sophisticated AC Power Source that is capable of simulating a wide variety of AC line conditions, harmonic waveforms, accurate power measurements and analysis. Chroma 6500 Series Programmable AC Power Source delivers the right solution to simulate all kinds of normal/abnormal input conditions and measure the critical characteristics of the products under test. It can be utilized in R&D design, production test, and QA verification for commercial, industrial, and aerospace electronic products.

Chroma 6500 Series AC Power Source delivers the maximum rated power for the output voltage up to 300 Vac, and the frequency between 15Hz to 2000Hz. It is suitable for commercial applications (47-63Hz) such as avionics, marine, and military applications at 400Hz or higher frequency ; or for electrical motor, air conditioner test applications at 20Hz. All models generate very clean sine or square waveforms output with typical distortion less than 0.5%.

Chroma 6500 Series has built in Direct Digital Synthesis (DDS) Waveform Generator to provide user programmable high precision waveform. For the product tests under AC line distortion conditions, clipped sine wave can be generated with 0% to 43% distortion and amplitude from 0% to 100%. It also can

simulate all kinds of power line disturbances such as cycle dropout, transient spike, brown out, phase angle, voltage and frequency ramp up (ramp down), etc. Up to 30 harmonic waveforms are factory-installed, and testing for compliance to AC line harmonic immunity standards can be easily achieved in the field.

The 6500 Series has built in 16-bit precision measurement circuit to offer precision and highspeed measurements for Vrms, Irms, Ipk+, Ipk-, power, frequency, crest factor, power factor, inrush current, VA, and VAR, etc.

The 6500 Series provides easy operation through the front panel keypad, or remote controller via GPIB, RS-232 bus or APG (Analog Programming) interface. Instrument drivers are available to integrate the AC source into the ATE application operations under Labview control.

Designed with self-diagnostic routine and protections against overload, overpower, over temperature, over current and fan fail, the 6500 Series instrument has the qualities and reliability that can suit for the most demanding production line applications.



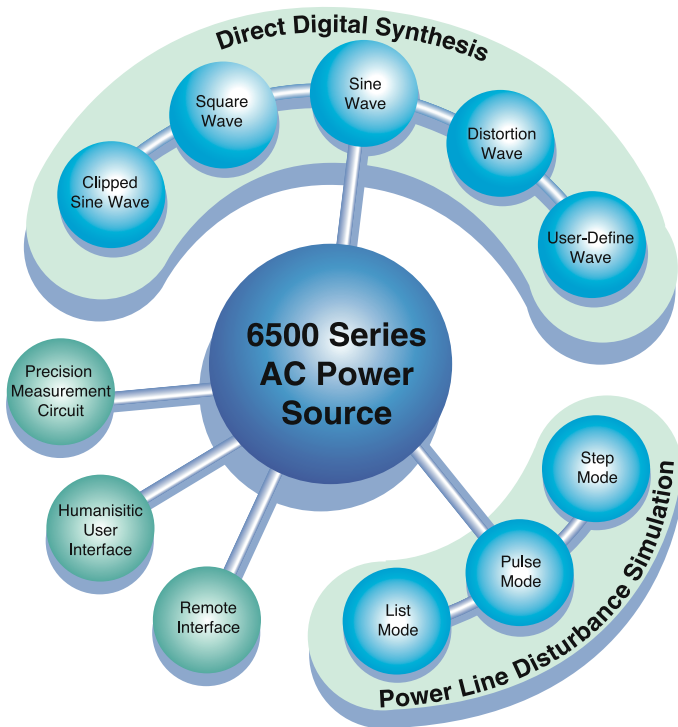
MODEL 6500 SERIES

KEY FEATURES

- Output Rating :
 - Power : 1200VA, 1 ϕ (6512)
 - 2000VA, 1 ϕ (6520)
 - 3000VA, 1 ϕ (6530)
 - 6000VA, 1 ϕ (6560)
 - 9000VA, 1 ϕ or 3 ϕ (6590)
- Voltage : 0-150V / 0-300V / Auto (6512,6520, 6530)
- 0-150V / 0-300V(parallel)(6560)
- 0-300V / 0-500V (series)(6560)
- 0-150V / 0-300V (6590)
- Direct Digital Synthesis (DDS) waveform generation.
- Programmable Sine, Square, or Clipped Sine waveform output
- Programmable voltage, current limit, frequency, phase, and distortion
- Power line disturbances simulation capability
- 30 factory-installed harmonic waveforms in the waveform library
- User programmable harmonic waveforms
- User programmable sequential output waveforms for auto-execution
- Powerful measurement of Vrms, Irms, Ipk+, Ipk-, power, frequency, crest factor, power factor, inrush current, VA, VAR, etc.
- Built-in power factor correction circuit provides input power factor over 0.98 to meet the IEC regulations
- Advanced PWM technology delivers high power output in a light and compact rack-mountable package
- Built-in output isolation relays
- User-definable power-on state
- TTL output to any signal output transition for ATE application
- Analog Programming Interface for external amplitude control
- Option GPIB and RS-232 bus interface
- LIST mode, transient power line disturbances simulation, Voltage Dip & Variation, for pre-compliance test IEC 61000-4-11
- Easy use graphic user interface : softpanel



Chroma



ADVANCED PWM TECHNOLOGY

The input AC to DC stage in the AC Source incorporates modern power factor correction circuit to increase the input power factor more than 0.98 to meet the IEC regulations. It reduces the input current requirement and raises the efficiency up to over 80%. Using the isolation provided by DC to DC stage, the final DC to AC output stage eliminates the heavy low frequency output transformer, and decreases the weight to 30 Kgs only. The model 6530, packaged in 5U height rack-mountable unit, delivers full 3,000 VA output at 100V or 200V.

STATE-OF-THE-ART DDS WAVEFORM GENERATOR

Chroma 6500 Series AC Power Source has built in powerful Direct Digital Synthesis (DDS) waveform generator to provide low distortion (0.5%) sine or square waveform over a maximum frequency range from 15 to 2000Hz, with 0.01Hz (15 - 99.99Hz) resolution and 0.15% accuracy. For example, a unique clipped sine wave with 0% to 43% distortion and 0 to 100% amplitude can be generated by pressing the front panel keys for testing products under ac line distortion conditions.

COMPREHENSIVE WAVEFORM LIBRARY

Up to 30 different distortion waveforms including line conditioner, line filter, triangle wave, pulse wave, and peak spike, etc. are stored in the waveform library for execution. Users can preview the selected waveform on the LCD graphic display by pressing the "WAVE" soft key. To specify the waveform amplitude desired at each specific phase angle can modify the stored waveforms.

Testing for compliance to ac line harmonic immunity standards can be easily achieved. Sine wave with harmonic content specified by IEC 61000 standards can be recalled, downloaded into memory, and generated as needed.

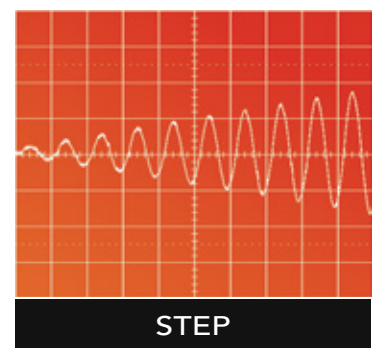
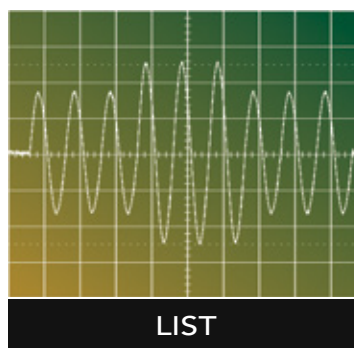
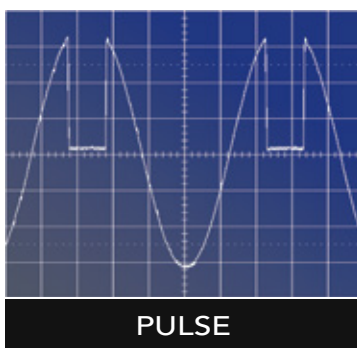
Additionally, Chroma 6500 Series AC Power Source offers six user-defined arbitrary waveform buffers. Users can create the desired waveforms from a host PC and download them to the instrument through GPIB or RS-232 interface.

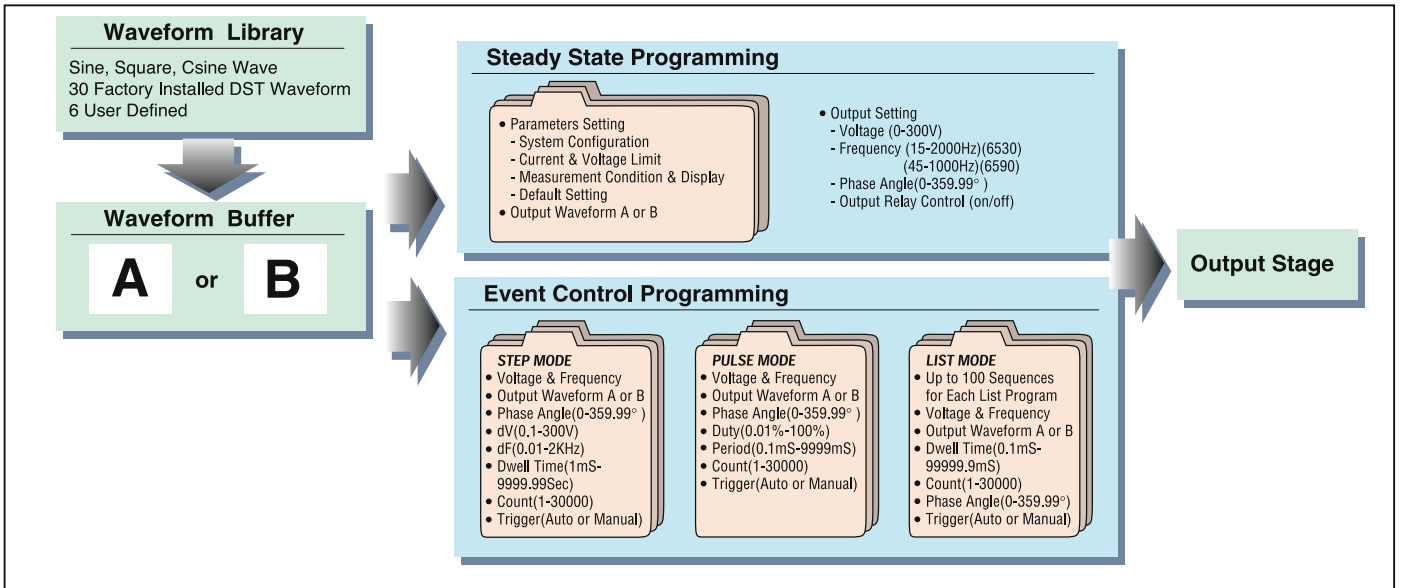


TRANSIENT POWER LINE DISTURBANCE SIMULATION

In addition to programming the steady output voltage and frequency, the AC Source provides a powerful tool to simulate all kinds of power line disturbance conditions. The step and pulse modes offer an easy and convenient method to execute single step or continue output changes. The output voltage amplitude, frequency, phase angle, and waveform shape can be controlled in response to input trigger generated from an internal or external event. With this capability, it is easy to simulate power line disturbances such as cycle dropout, transient spike, brown out, and ramp up, etc. This feature is very important for the maximum inrush current test when the UUT is switched on at 90 degrees, so is for the UUT's ride-through effect check when an AC input transient spike is applied.

The List transient mode extends this capability further for more complex waveform generation needs. Up to 40 sequences of output setting can be precisely executed in response to a triggered or paced dwell time programmed in advance without computer intervention. Output triggers can be generated at the beginning and the end of each List loop setup to synchronize external events and to simulate power line disturbances for pre-compliance test of IEC 61000-4-11 Voltage Dip & Variation.





POWERFUL MEASUREMENT

This instrument has 16-bit precision measurement circuit built-in and firmware utilities to measure the steady and transient responses of true RMS voltage, true RMS current, true power, power factor, frequency, peak repetitive current, inrush current, current crest factor, VA (apparent power), and VAR (reactive power). Using the high-speed sampling circuit, it can display the measured voltage and current as a waveform on the LCD display for transient state analysis without the need of a scope.

VERSATILE OPERATION

Chroma 6500 Series AC Source is easy to operate using the front panel keypad, or a remote controller. The printer interface is also available for printing out the instrument conditions or measurement readings. In ATE applications, model 6530 is controlled via GPIB, RS-232, or Analog Programming Interface.

The instrument is designed with user friendliness in mind. It uses thermo-control DC Fan and the speed increases only when internal temperature rises and calls for more heat ventilation. This minimizes the acoustic noise from the fan during operation. The large size 320 x 240 LCD shows the test setup and operating status with the most comfortable visual effect possible. The software improves user interface by creating soft-keys to guide users during test execution. The rotary knob input enables users to adjust the voltage, frequency, and parameter setting on the fingertip with maximum speed and control

SELF DIAGNOSIS AND PROTECTION

The instrument has built in self-diagnosis routine to calibrate its performance and assist trouble shooting for failure. It is protected against over voltage, overload, over current, overpower, over temperature to ensure the instrument quality and performance for all kinds of applications in R&D, QA, Production, and field services.

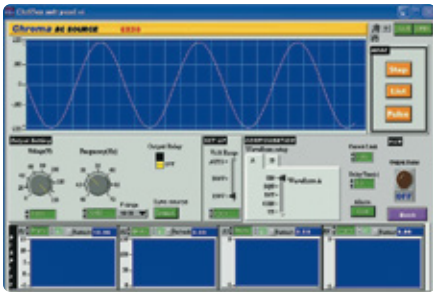


Model 6560 : 6KVA

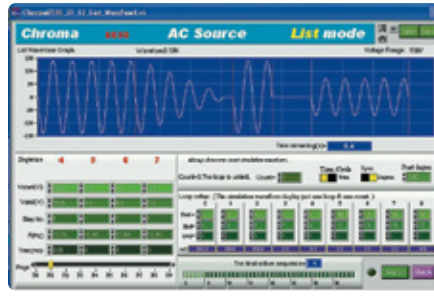
Model 6590 : 9KVA

THE EASY-USE SOFTWARE : THE 6500 SERIES SOFTPANEL

Users can install the software in computer to control the AC source via GPIB and RS-232. The easy-use graphic interface help users to program or edit waveforms. All test program can be saved in a file for future recall.



Main Operation Menu



Transient Voltage Programming



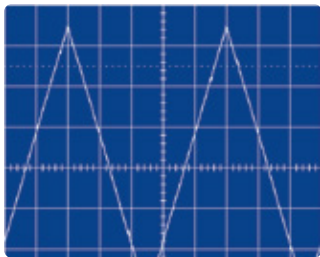
Waveform Editor

SIMULATE AC POWER DISTORTION

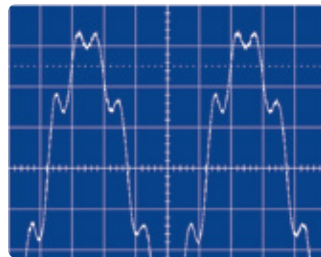
More and more electronics manufactures have expanded their business to acquire worldwide product distribution. When a problem is identified, sometimes it is necessary to check if the products are susceptible to ac line disturbances. However, precious time would be wasted on gathering and transferring test equipment, man power and other resources to do a simple onsite test. The purpose of this application is to provide a solution using Chroma Power Meter 66200 Series to measure the voltage harmonics of the ac main on site. All recorded data can be sent to the lab. According to the data, users can use waveform editor function of AC Source 6500's softpanel to re-build the original distorted waveform. It can help engineers quickly point out the problem and come up with a solution.

WAVEFORM LIBRARY

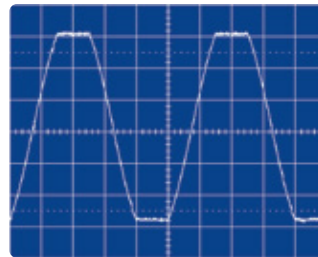
Up to 30 different Distortion Waveforms and 6 user-Define Wareforms are stored in the Waveform Library for user edit and execution.



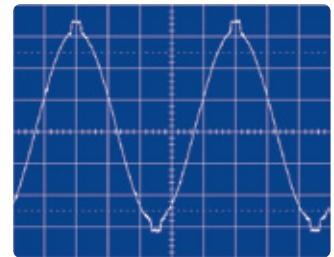
TRIANGLE WAVE



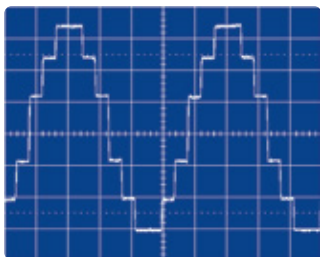
NON-LINEAR



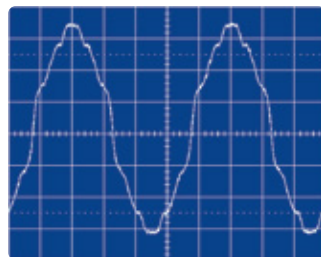
FLAT-TOP SINEWAVE



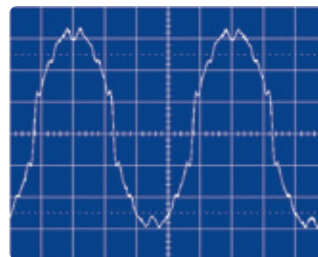
FLAT-TOP SINEWAVE



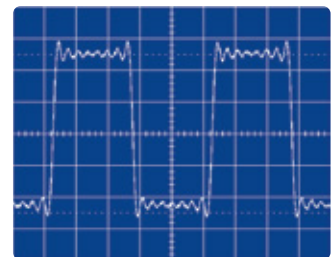
STEP INVERTER



FERRO-RESONANT XFMR



LINE-FILTER

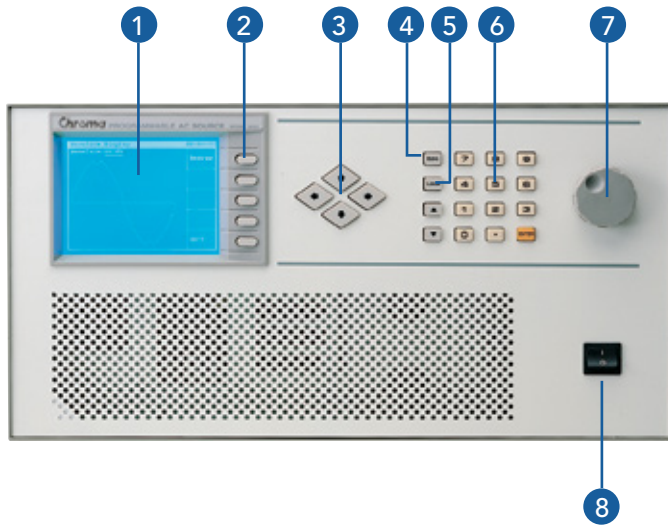


UPS

Please refer to the user's manual for more factory-installed Waveforms and specifications

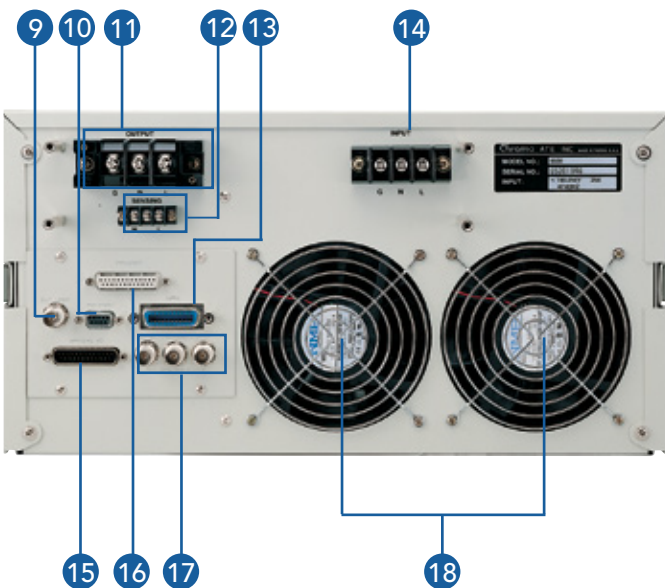
PANEL DESCRIPTION

Model 6530



FRONT PANEL

1. LCD Display
320 x 240 graphic LCD display to show the test set up, operating status, readings and waveforms
2. Soft-Key
5 soft-keys adjacent to the command block display on the LCD that provide users a menu driven interface to control the AC Source operation
3. Cursor Key
For cursor movement
4. Edit Key
To enter into editing mode for real voltage adjustment and frequency setting by pressing Up/ Down keys or Rotary Knob
5. Local Key
Use to switch the system control from Remote Mode to Local Mode
6. Numeric Key
For data setting
7. Rotary Knob
Use to adjust the voltage, frequency and parameter setting
8. Power Switch



REAR PANEL

9. External V Reference
External programming voltage input
10. RS-232 Interface
11. Output Terminal
12. Remote Sense
The remote sense/ feedback circuit guarantees the output accuracy and stability
13. GPIB Interface
14. Input Terminal
15. Special I/O Port
16. Printer Interface
17. System I/O Port
The Sync, Clock, and Vref. ports for system expansion
18. Cooling Fan

ORDERING INFORMATION

6512 : Programmable AC Source 0~300V/15~2KHz / 1.2KVA
 6520 : Programmable AC Source 0~300V/15~2KHz / 2KVA
 6530 : Programmable AC Source 0~300V/15~2KHz / 3KVA
 6560-2 : Programmable AC Source 0~500V/45~1KHz / 6KVA I/P 3Ø 220V
 6560-3 : Programmable AC Source 0~500V/45~1KHz / 6KVA I/P 3Ø 380V
 6590-2 : Programmable AC Source 0~300V/45~1KHz / 9KVA 1Ø or 3Ø,
 3000VA per phase, I/P 3Ø 220V
 6590-3 : AC Power Source 0~300V/45~1KHz / 9KVA 1Ø or 3Ø,
 3000VA per phase, I/P 3Ø 380V

A650001 : Remote Interface for Model 6500 Series
 (External V Reference, RS-232 interface, Printer Interface,
 GPIB Interface, Special I/O Port , System I/O Port)
 A650002 : 19" Rack Mounting Kit for Model 6512/6520/6530
 A650003 : Softpanel for Model 6500 Series
 A610004 : Universal Socket Center for
 Model 6512/6520/6530/6560 Series
 A600009 : GPIB Cable (200cm)
 A600010 : GPIB Cable (60cm)

SPECIFICATIONS

Model	6512	6520	6530	6560	6590
Output Phase	1	1	1	1 (parallel or series)	1 or 3 selectable
Output Ratings					
Power	1200VA	2000VA	3000VA	6000VA	3000VA per phase, 9000VA total
Voltage					
Range/phase	150V / 300V / Auto	150V / 300V / Auto	150V / 300V / Auto	150V / 300V (parallel) 300V / 500V (series)	150V / 300V
Accuracy	0.2% +0.2%of F.S.	0.2% +0.2%of F.S.	0.2% +0.2%of F.S.	0.2% +0.2%of F.S.	0.2% +0.2%of F.S.
Resolution	0.1V	0.1V	0.1V	0.1V	0.1V
Distortion *1	1% (15~45Hz) 0.5% (> 45~500Hz) 1% (> 500~1kHz) 2% (> 1K~2kHz)	1% (15~45Hz) 0.5% (> 45~500Hz) 1% (> 500~1kHz) 2% (> 1K~2kHz)	1% (15~45Hz) 0.5% (> 45~500Hz) 1% (> 500~1kHz) 2% (> 1K~2kHz)	1% (45~1kHz)	1% (45~1kHz)
Line Regulation	0.1%	0.1%	0.1%	0.1%	0.1%
Load Regulation *2	0.1%	0.1%	0.1%	0.2% (series), 0.8% (parallel)	0.2%
Temp. Coefficient	0.02% per°C	0.02% per°C	0.02% per°C	0.02% per°C	0.02% per°C
Max. Current/Phase					
RMS	12A/6A (150V / 300V)	20A/10A (150V / 300V)	30A/15A (150V / 300V)	60/30/15A (150/300/500V)	30A/15A (150V / 300V) 90A/45A total
peak	36A/18A (15~100Hz) 30A/15A (>100~1KHz) 24A/12A (>1K~2KHz)	60A/30A (15~100Hz) 50A/25A (>100~1KHz) 40A/20A (>1K~2KHz)	90A/45A (15~100Hz) 75A/38A (>100~1KHz) 60A/30A (>1K~2KHz)	180/90/45A (45~100Hz) 150/75/38A (>100~1KHz)	90A/45A (45~100Hz) 75A/38A (>100~1KHz) 270A/135A total (45~100Hz) 225A/114AA total (>100~1KHz)
Frequency					
Range	15 ~ 2kHz	15 ~ 2kHz	15 ~ 2kHz	45 ~ 1kHz	45 ~ 1kHz
Accuracy	0.15%	0.15%	0.15%	0.15%	0.15%
Resolution	0.01Hz (15 ~ 99.9Hz) 0.1Hz (100 ~ 999.9Hz) 0.2Hz (1k ~ 2kHz)	0.01Hz (15 ~ 99.9Hz) 0.1Hz (100 ~ 999.9Hz) 0.2Hz (1k ~ 2kHz)	0.01Hz (15 ~ 99.9Hz) 0.1Hz (100 ~ 999.9Hz) 0.2Hz (1k ~ 2kHz)	0.01Hz (45 ~ 99.9Hz) 0.1Hz (100 ~ 999.9Hz)	0.01Hz (45 ~ 99.9Hz) 0.1Hz (100 ~ 999.9Hz)
Input Ratings					
Voltage Operating Range	1Ø 200~240V ± 10%V _{LN}			3Ø 200~240V ± 10%V _{LN}	
Frequency Range	47 ~ 63Hz	47 ~ 63Hz	47 ~ 63Hz	47 ~ 63Hz	47 ~ 63Hz
Current	10A max.	15A max.	23A max.	23A max./phase	23A max./phase
Power Factor	0.95 min. under full load	0.97 min. under full load	0.98 min. under full load	0.98 min. under full load	0.98 min. under full load
Measurement					
Voltage/Phase					
Range	0 ~ 150V / 0 ~ 300V	0 ~ 150V / 0 ~ 300V	0 ~ 150V / 0 ~ 300V	0 ~ 150V / 0 ~ 300V	0 ~ 150V / 0 ~ 300V
Accuracy (RMS)	0.25% + 0.1% F.S.	0.25% + 0.1% F.S.	0.25% + 0.1% F.S.	0.25% + 0.1% F.S.	0.25% + 0.1% F.S.
Resolution	0.1V	0.1V	0.1V	0.1V	0.1V
Current/Phase					
Range (peak)	0 ~ 60A	0 ~ 100A	0 ~ 140A	0 ~ 280A	0 ~ 140A
Accuracy (RMS)	0.4% + 0.25%F.S.	0.4% + 0.15%F.S.	0.4% + 0.1%F.S.	0.4% + 0.1%F.S.	0.4% + 0.1%F.S.
Accuracy (peak)	0.4% + 0.5%F.S.	0.4% + 0.3% F.S.	0.4% + 0.2% F.S.	0.4% + 0.2% F.S.	0.4% + 0.2% F.S.
Resolution	0.01A	0.01A	0.01A	0.01A	0.01A
Power/Phase					
Accuracy	1% F.S. (CF<6)	1% F.S. (CF<6)	1% F.S. (CF<6)	1% F.S. (CF<6)	1% F.S. (CF<6)
Resolution	0.01W	0.01W	0.01W	0.01W	0.01W
Frequency					
Range	15 ~ 2kHz	15 ~ 2kHz	15 ~ 2kHz	45 ~ 1kHz	45 ~ 1kHz
Accuracy	0.01% +2 count	0.01% +2 count	0.01% +2 count	0.01% +2 count	0.01% +2 count
Resolution	0.01Hz	0.01Hz	0.01Hz	0.01Hz	0.01Hz
Others					
Efficiency	80% typical	80% typical	80% typical	80% typical	80% typical
Protection	OPP, OLP, OTP, FAN Fail				
Temperature					
Operating	0 ~ 40°C	0 ~ 40°C	0 ~ 40°C	0 ~ 40°C	0 ~ 40°C
Storage	-40 ~ +85°C	-40 ~ +85°C	-40 ~ +85°C	-40 ~ +85°C	-40 ~ +85°C
Safety & EMC	meet LVD and EMC requirements				
Dimension (H x W x D)	221.5x425x567 mm/ 8.72x16.73x22.32 inch	221.5x425x567 mm / 8.72x16.73x22.32 inch	221.5x425x567 mm / 8.72x16.73x22.32 inch	765.94x546x700 mm/ 30.16x21.5x27.56 inch*3	888.5x546x700 mm/ 34.98x21.5x27.56 inch*3
Weight	26.4 kg / 58.15 lbs	26.4 kg / 58.15 lbs	26.4 kg / 58.15 lbs	107 kg / 235.68 lbs	156 kg / 343.61 lbs

Note*1 : Test under output voltage from half to full range.

Note*2 : Test with sinewave & with remote sense.

Note*3 : For dimension including the wheel set, please add 80mm to overall height.

* All Specifications are subject to change without notice.

Get more product & global distributor information in Chroma ATE APP



iOS



Android

Search Keyword

6500

HEADQUARTERS
CHROMA ATE INC.
66 Huaya 1st Road,
Guishan, Taoyuan
33383, Taiwan
T +886-3-327-9999
F +886-3-327-8898
www.chromaate.com
info@chromaate.com

U.S.A.
CHROMA SYSTEMS
SOLUTIONS, INC.
19772 Pauling,
Foothill Ranch,
CA 92610
T +1-949-600-6400
F +1-949-600-6401
www.chromausa.com
sales@chromausa.com

EUROPE
CHROMA ATE
EUROPE B.V. Morsestraat
32, 6716 AH Ede,
The Netherlands
T +31-318-648282
F +31-318-648288
www.chroma.eu.com
sales@chroma.eu.com

CHROMA GERMANY GMBH
Südtiroler Str. 9, 86165,
Augsburg, Germany
T +49-821-790967-0
F +49-821-790967-600
www.chroma.eu.com
sales@chroma.eu.com

JAPAN
CHROMA JAPAN
CORP.
888 Nippa-cho,
Kouhoku-ku,
Yokohama-shi,
Kanagawa,
223-0057 Japan
T +81-45-542-1118
F +81-45-542-1080
www.chroma.co.jp
info@chroma.co.jp

KOREA
CHROMA ATE
KOREA BRANCH
3F Richtogether
Center, 14,
Pangyoeyeok-ro 192,
Bundang-gu,
Seongnam-si,
Gyeonggi-do
13524, Korea
T +82-31-781-1025
F +82-31-8017-6614
www.chromaate.co.kr
info@chromaate.com

CHINA
CHROMA ELECTRONICS
(SHENZHEN) CO., LTD.
8F, No.4, Nanyou Tian
An Industrial Estate,
Shenzhen, China
T +86-755-2664-4598
F +86-755-2641-9620
www.chroma.com.cn
info@chromaate.com

SOUTHEAST ASIA
QUANTEL PTE LTD.
(A company of Chroma Group)
25 Kallang Avenue #05-02
Singapore 339416
T +65-6745-3200
F +65-6745-9764
www.quantel-global.com
sales@quantel-global.com